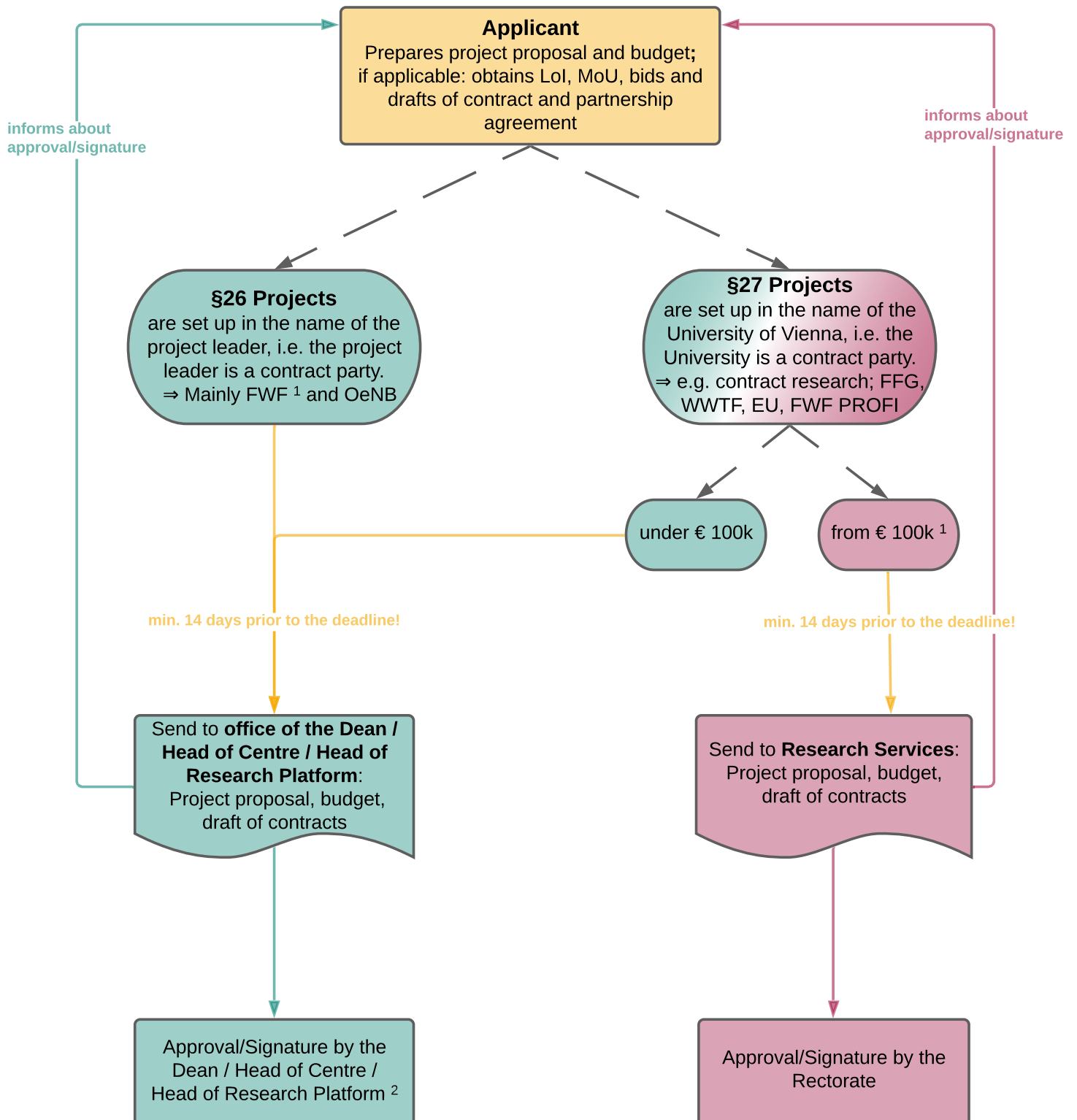


Internal procedure for submission of project proposals



1: ATTENTION - depending on the programme, FWF projects can fall under §26 or §27. In deviation from the normal submission process, submissions for the FWF programmes *1000-Ideen* and *ESPRIT* for a **project volume of €100k or more are also processed via the faculties.**

2: If the Dean or the Head of Centre submits an application, the application is signed by the Vice Dean or Vice Head of Centre; if the application is submitted by the Head of Research Platform, the application is signed by the Rectorate.